



Griffco Valve Inc.
 6010 N. Bailey Ave., Suite 1B
 Amherst, NY 14226
 Phone: 1 716 835-0891
 Fax: 1 716 835-0893

HIGH FLOW SERIES BACK PRESSURE VALVES



Griffco high flow diaphragm back pressure valves are designed to enhance the performance of higher flow, continuous feed pumps that require a constant head pressure, while also acting as an anti-siphon valve. Larger orifice sizes make the valve ideal for use with higher viscosity fluids. Wetted materials include: **PVC, CPVC, PP, PVDF, PTFE, 316 SS, A 20 and Hast. C.** Available in 1/2", 3/4" and 1" sizes.

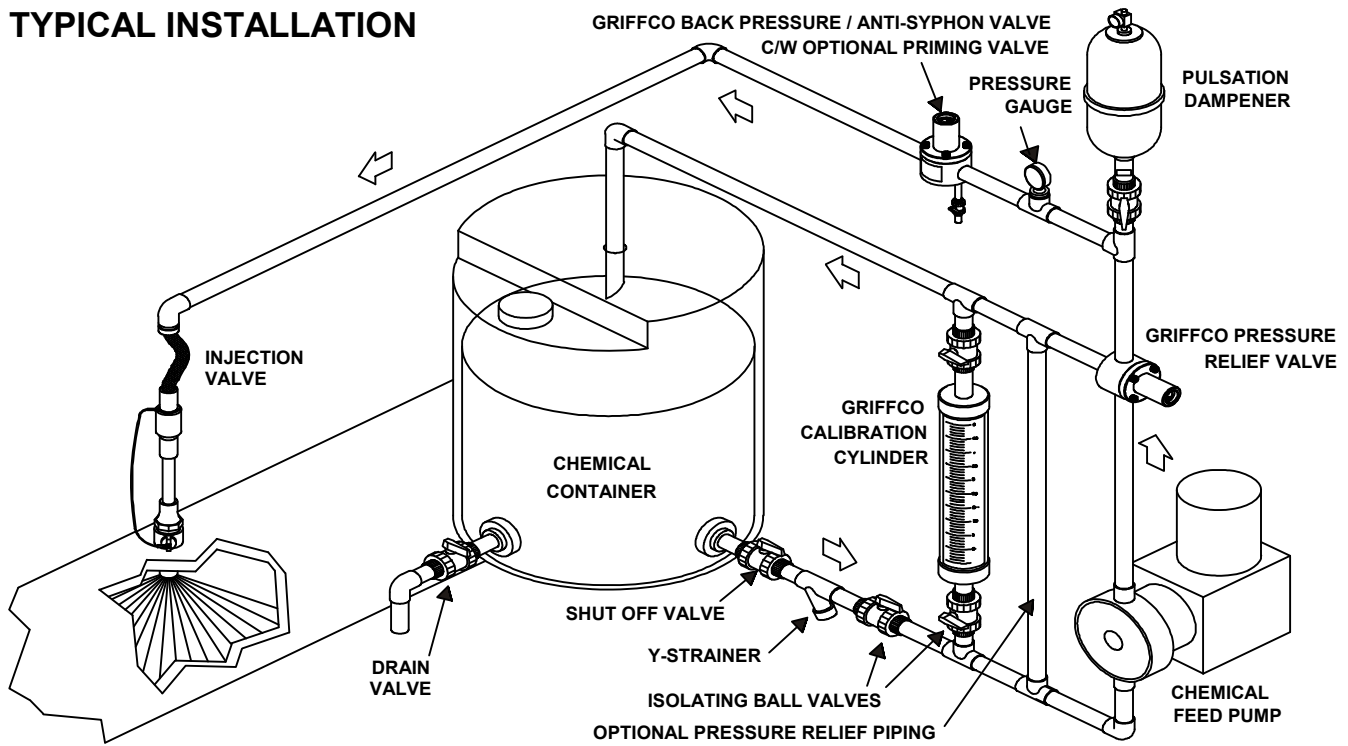
Features:

- High Reliability / Low Cost
- Large Orifice for High Viscosity Fluids
- Higher Flow / Lower Pressure Drop
- Adjustable 10 - 150 PSI
- Anti-Siphon Function
- Robust, Machined Construction
- Vulcanised PTFE/EPDM Diaphragm
- Wide Range of Materials

Operation:

Griffco diaphragm back pressure valves apply positive discharge pressure to any pump system to prevent siphoning and eliminate varying dosage rates caused by fluctuating downstream pressure. The diaphragm is held against the valve seat by an internal spring. When the preset pressure is exceeded, the diaphragm is forced up and chemical flows through the valve to the injection point. The valves are preset for 50 psi, however they are field adjustable from 10 - 150 psi via the adjustment screw. Installation should be as close to the injection point as possible to prevent chemical line drainage, and it is most important that all chemical system equipment such as pulsation dampeners and pressure gauges are between the pump and back pressure valve.

TYPICAL INSTALLATION



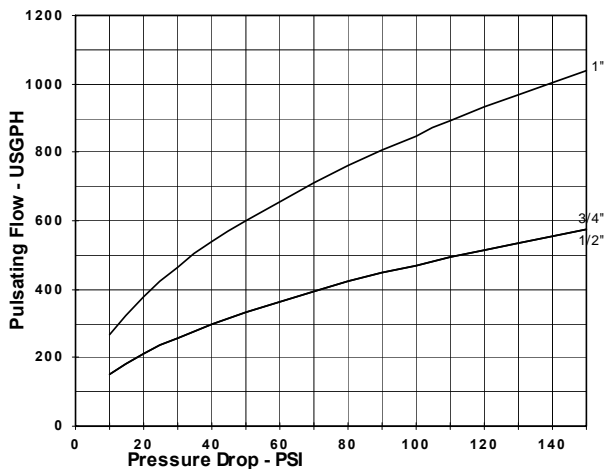
CALL 1 - 800 - GRIFFCO

Bulletin # BPHF1005-2008R1

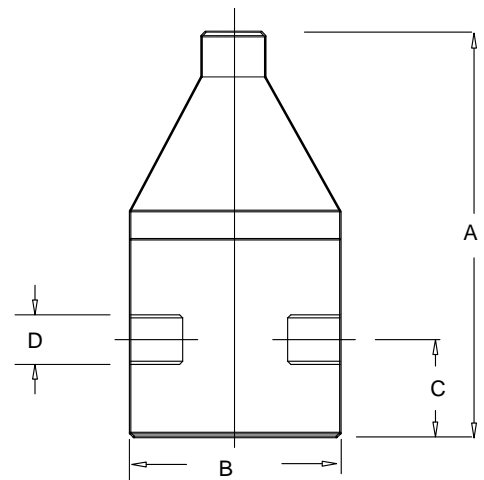
Technical Data:

Sizes: Model BPHF		1/2", 3/4", 1"			
Connections:		NPT, Socket, Union & Flange			
Pressure Adjustment		10 - 50 psi, 10 - 150 psi			
Flow Rates @ 150 psi		Shipping Weight: lbs			
Size	Pulsating	Continuous	Plastic	Metal / Plastic Top	Metal / Metal Top
1/2"	600 USgph	30 USgpm	3.5	6.0	7.0
3/4"	600 USgph	30 USgpm	3.5	6.0	7.0
1"	1000 USgph	54 USgpm	7.0	14.0	23.0
Max Temperature: (°F)		PVC: 140° ; CPVC & PP: 195°; PVDF, PTFE and all Metal: 300°, (Peak 390°)			
Materials of Construction:					
Diaphragm		PTFE / EPDM, Optional: Viton & PTFE / Viton			
Valve Top		Standard: Noryl Optional: 316 SS			
Valve Body		PVC, CPVC, PP, PTFE, PVDF, 316 SS, A 20, Hast. C, Others on Request			

Performance Curves



Dimensions:



Product Codes For Ordering:

BPHF

□ □ □ □ □
1 2 3

1 = Size

050 - 1/2"
075 - 3/4"
100 - 1"

2 = Material

P - PVC
CP - CPVC
PP - Polypro
T - PTFE
K - PVDF
S - 316 SS
A - Alloy 20
C - Hastalloy C

3 = Options

V - Viton Diaphragm
TV - PTFE/Viton Diaphragm
S - Socket Connections
F - Flanged Connections
U - Union Connections
B - BSP Threads
OSS - Optional 316 SS Top
MSS - 50 - 350 psi; 316 SS Top
AR - Optional Priming Valve

D	A	B	C
1/2"	5.90	3.50	1.25
3/4"	5.90	3.50	1.25
1" Plastic	7.30	4.50	1.28
1" Metal	7.56	4.90	1.28

For more detailed information visit us at www.griffcovalve.com