



Griffco Valve Inc.

6010 N. Bailey Ave. Suite. 1B

Amherst, NY 14226

PH: 716 835-0891

FAX: 716 835-0893

M-SERIES PRESSURE RELIEF VALVES



Features:

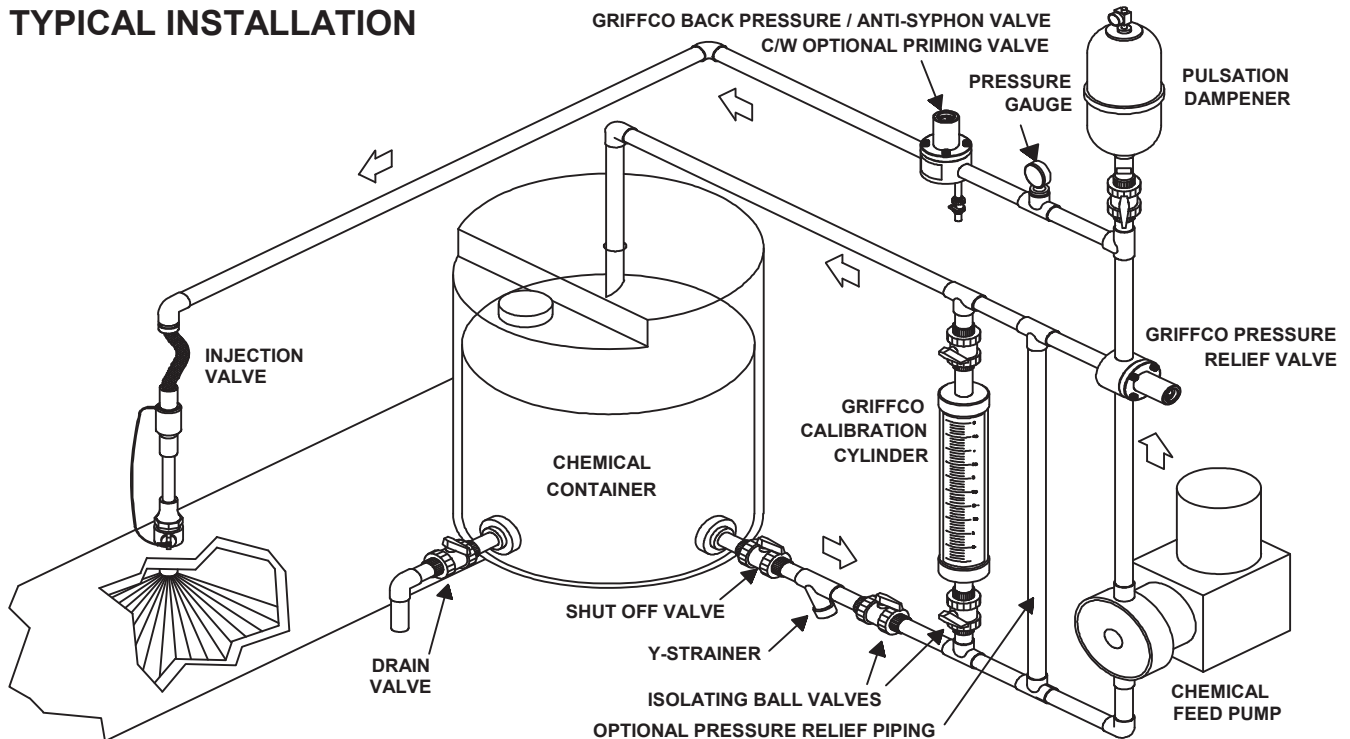
- NEW Molded Noryl Top
- High Reliability / Low Cost
- Compact Size for OEM Applications
- Adjustable Pressure Settings
- Optional 350 PSI Rated Valve
- 3 Port, 2 Port, & 90° Configuration
- Robust, Machined Body Construction
- Multiple Diaphragm Materials
- Wide Range of Valve Body Materials

Operation:

Griffco diaphragm pressure relief valves operate when the pressure in the chemical system exceeds the preset pressure of the valve. The diaphragm is held against the valve seat by an internal spring. When the preset pressure is exceeded the diaphragm is forced up and the chemical flows out the relief port, back to the chemical tank or to the suction side of the pump. The valves are pre-set at 50 psi, however they are field adjustable from 10 - 150 psi, via the adjustment screw. The relief valve should be set approximately 15 psi higher than the system pressure. Installation should be made as close to the pump as possible, without any valves or accessories between the relief valve and the pump. Consult your pump manufacturer for his recommendations.

Griffco M-Series diaphragm pressure relief valves are designed to protect chemical feed systems from over pressure damage caused by defective equipment or a blockage in the chemical feed line. Robust construction ensures reliability in the rigorous service of municipal and industrial applications. Wetted materials include: **PVC, CPVC, PP, PVDF, PTFE, Halar, 316 SS, A20 and Hastalloy C.** Available sizes: 1/4" - 1/2".

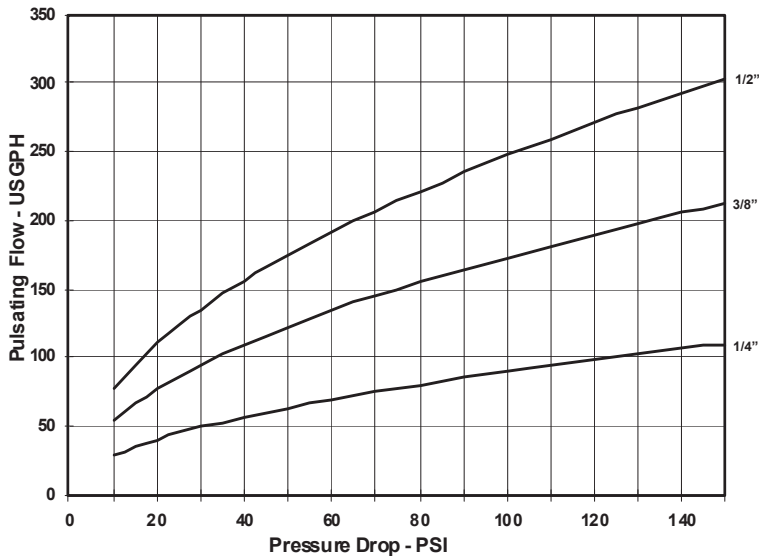
TYPICAL INSTALLATION



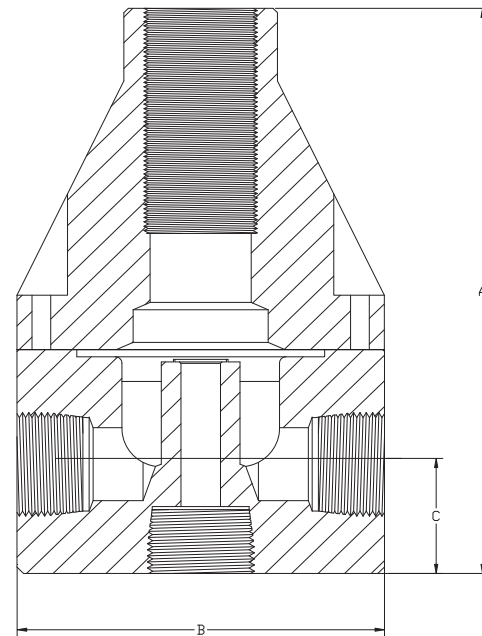
Technical Data:

Sizes: Model PRM			1/4", 3/8", 1/2"		
Connections:			NPT and Socket		
Pressure Adjustment			Standard 10 - 150 psi, Optional: 0 - 50 psi, 10 - 250 psi, 50 - 350 psi		
Flow Rates @ 150 psi			Shipping Weight: lbs		
Size	Pulsating	Continuous	Plastic	Metal / Plastic Top	Metal / Metal Top
1/4"	100 USgph	5 USgpm	1.0	2.5	3.0
3/8"	200 USgph	10 USgpm	1.0	2.5	3.0
1/2"	300 USgph	15 USgpm	1.0	3.0	3.5
Max Temperature: (°F)			PVC: 140°; CPVC & PP: 195°; PTFE & PVDF & Metal: 300°, (Peak 390°)		
Max Operating Pressure @ 70°F: (psi)			Plastic/Noryl: 375 psi, Metal /Metal: 2000 psi		
Materials of Construction:					
Diaphragm			PTFE / EPDM, Optional: Viton, Hypalon, Nitrile, PTFE / Viton		
Valve Top			Standard: Noryl Optional: 316 SS		
Valve Body			PVC, CPVC, PP, PTFE, PVDF, 316 SS, A 20, Hast. C, Others on Request		

Performance Curves:



Dimensions:



Product Codes for Ordering:

PRM

 1 2 3 4

1 = Size **2 = Material** **3 = Spring Opt** **4 = Options**

025 - 1/4" P - PVC 1 - 0 - 50 psi V - Viton Diaphragm
038 - 3/8" CP - CPVC 2 - 10 - 250 psi S - Socket Connection
050 - 1/2" PP - Polypro F - Flange Connection
 T - PTFE U - Union Connection
 K - PVDF B - BSP Connections
 H - Halar OSS - 316 SS Top
 S - 316 SS MSS - 50 - 350 psi
 A - Alloy 20 AR - Priming Valve
 C - Hastalloy C 90 - 90° Configuration

Note: For Optional 2-Port pressure relief valve put "2" after PRM

Note: Option MSS is only for use on 316SS, A20, & Hast C Valves.

DIMENSIONS: PRM-SERIES			
All Materials			
Size	A (in)	B (in)	C (in)
1/4"	3.550	2.350	0.750
3/8"	3.550	2.350	0.750
1/2"	4.250	2.350	1.080